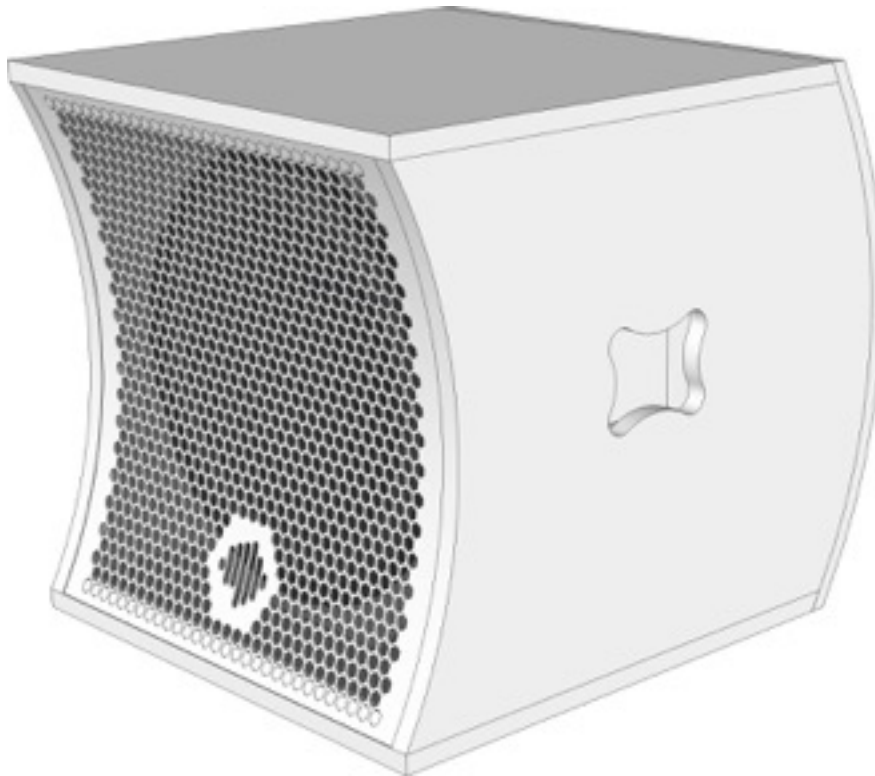


# **B** Series User Manual

## Passive Loudspeaker



Model: B15



**acoustic density**

[www.acousticdensity.com](http://www.acousticdensity.com) | [office@acousticdensity.com](mailto:office@acousticdensity.com)





## Table of Contents

1. Instructions .....	4
2. Precautions .....	5
3. System Features .....	6
4. Quick Setup .....	7
5. Recommended System Configuration .....	8
6. Tripod Operation .....	9



**WARNING: DO NOT EXPOSE TO RAIN OR MOISTURE.  
WARNING: DO NOT EXPOSE THIS APPARATUS TO DRIPPING  
OR SPLASHING AND DO NOT PLACE OBJECTS FILLED WITH  
LIQUIDS, SUCH AS VASES, ON OR NEAR THE APPARATUS.**

---

Carefully open the shipping carton and check the product for any noticeable damage. If there is any evidence of damage which might have occurred in shipment, immediately notify your supplier or the transportation company which delivered it. Claims for damage sustained in transit must be made upon the carrier. Save all packing material for the claim agent who will supply you with the proper forms and give you the necessary instructions for filing out a claim.

### **IMPORTANT**

Keep this manual in a safe place during the product lifetime. This manual forms an integral part of the product. Reselling of the product is only possible if the user manual is available. Any changes made to the product have to be documented in writing and passed on to the buyer in the event of resale.

This manual contains essential information on installing and operating the product correctly and safely. It is necessary to read this manual carefully in order to become familiar with these procedures.

As part of a continuous evolution of techniques and standards, Acoustic Density reserves the right to change the specifications of the product and the content of this manual without prior notice. Please check the Acoustic Density website at [www.acousticdensity.com](http://www.acousticdensity.com) on a regular basis for latest updates.



Management of WEEE (waste electrical and electronic equipment) (applicable in Member States of the European Union and other European countries with individual national policies on the management of WEEE) The symbol on the product or on its packaging indicates that this product may not be treated as regular household waste, but has to be disposed through returning it at an Acoustic Density dealer.



## 1. Instructions

1. Read these instructions.
2. Keep these instructions.
3. Heed all warnings.
4. Follow all instructions.
5. Do not use this apparatus near water.
6. Clean only with a dry cloth or a lightly moist one.
7. Do not block any ventilation openings. Install in accordance with the manufacturers instructions.
8. Do not install near any heat sources such as radiators, heat registers, stoves, or other apparatus (including amplifiers) that produce heat.
9. Only use attachments/accessories specified by the manufacturer. The user should never incorporate equipment or accesories not approved by Acoustic Density.
10. Refer all servicing to qualified service personnel. Servicing is required when the apparatus has been damaged in any way, liquid has been spilled or objects have fallen into the apparatus, has been exposed to rain or moisture, does not operate normally, or has been dropped.
11. Do not expose this apparatus to dripping or splashing and ensure that no objects filled with liquids, such as vases, are placed on this apparatus.
12. All system components must be inspected before use, in order to detect any possible defects. Any part showing any sign of defect must immediately be put aside and withdrawn from use to be inspected by qualified service personnel.
13. Do not place the product on an unstable cart, stand, tripod, bracket or table. The product may fall and be seriously damaged and may cause serious injury. Any mounting of the product should follow the manufacturer's instructions given in the manual and should use a mounting accesory recommended by the manufacturer.



## 2. Precautions

- If B15 subwoofers are used outdoors on a sunny day, place the loudspeakers in a shaded or covered area.
- Do not use B15 subwoofer in an environment where temperatures exceed +40°C (104°F).
- Never expose a B15 subwoofer to rain, water, or high moisture.
- Acoustic Density B15 subwoofers are easily capable of generating sound pressure levels sufficient to cause permanent hearing damage to anyone within normal coverage distance. Caution should be taken to avoid prolonged exposure to sound pressure levels exceeding 90 dB.
- Service is required when the product has been damaged in any way such as:
  - The product has been exposed to rain or moisture
  - The product was dropped or the enclosure is damaged
  - The product does not operate normally

### Information

**Do not modify this unit! Changes or modifications not expressly approved by the manufacturer could void the user's authority to operate the equipment.**

### 3. System Features

#### ACD B15 - 15” Two-Way Bass Speaker

The B15 subwoofer is a real kicker with the 15” neodymium speaker, 500W RMS power and an enclosure that was created for the maximum efficiency. It features an 18mm birch plywood enclosure assembled with the highest precision by Acoustic Density workers using professional equipment. It was all designed, assembled, tested and improved in Transylvania, in the Acoustic Density Factory by our technicians and engineers. It was put through a variety of tests in different applications to make sure it delivers the best quality for our customers.

The B15 is a highly versatile speaker due to its shape and accessories, which makes it suitable for a large variety of applications.

#### Specifications:

• Frequency Range	37 Hz – 150 Hz
• Max SPL	125.4 dB Max SPL
• Dimensions	L500/1500/h575
• Weight	22 kg
• Materials	18mm Plywood, internally braced
• Paint	Textured Paint
• Impedance	8 Ω
• Accessories	Pole Mounts and Handles

## 4. Quick Setup

With the passive B15 bass speaker is easy to setup a fast, high-quality sound system. To power one piece of B15 speaker it is recommended to use an amplifier with a power of 750W/channel @ $\Omega$ .

For an easy and quick installation, please consult the following steps and guides.

### Connecting Speakers

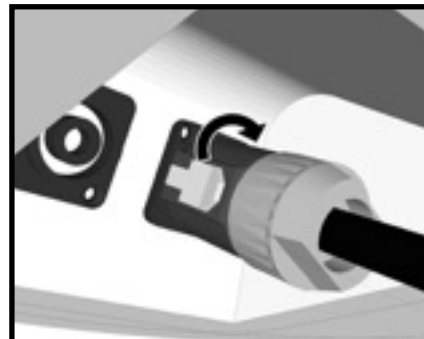
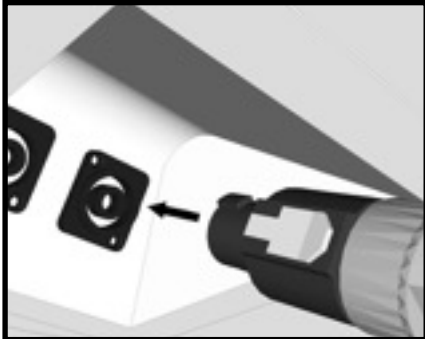
The B15 is equipped with 4-point Speakon<sup>®</sup> connectors allowing connection through audio cables that use Speakon<sup>®</sup> connectors at least at one end.

### Connecting

Step 1: Insert the wired speakon connector into the speakon socket found on the bottom back side of the speaker.

Step 2: Turn the wired speakon connector to the right until you will hear a click.

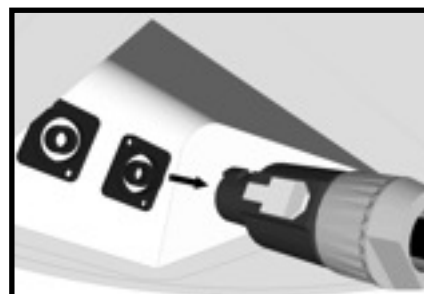
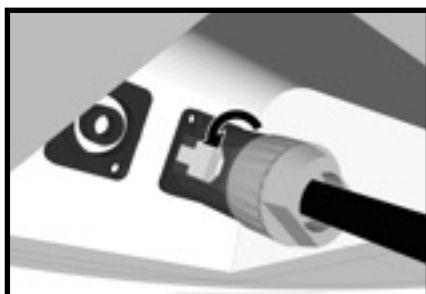
Step 3: Connect the other end of the cables with an appropriate amplifier.



### Disconnecting:

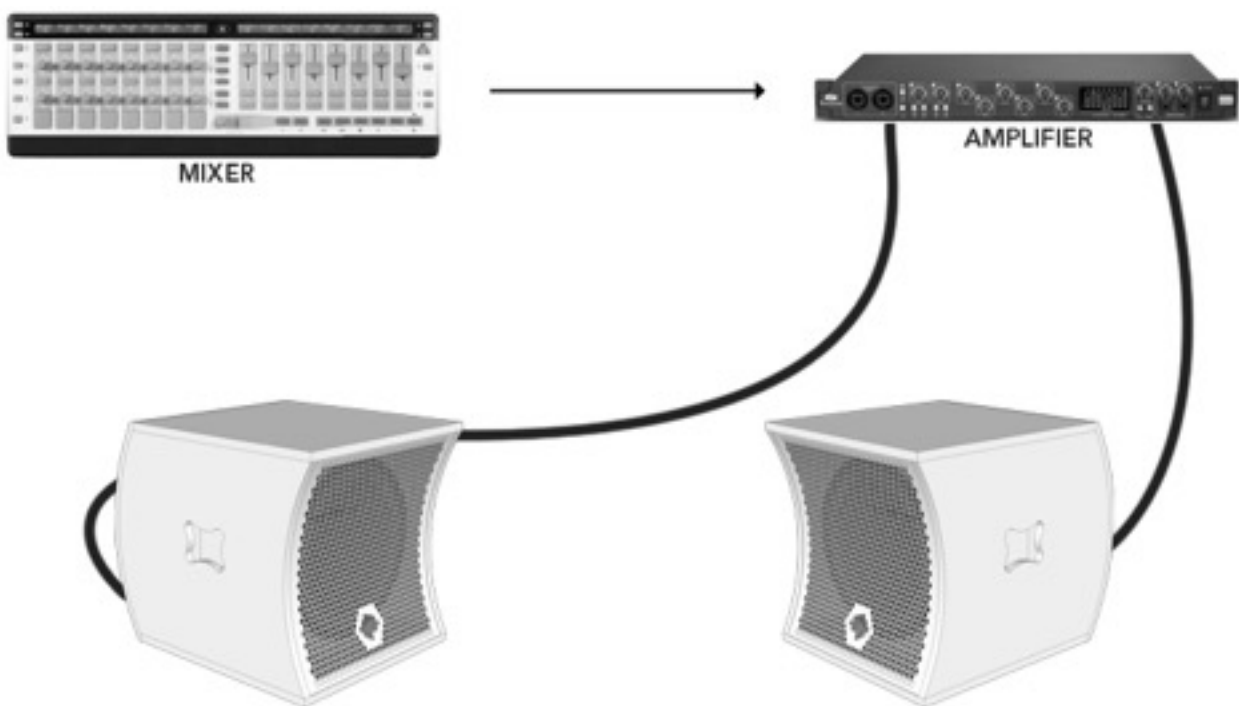
Step 1: Using the thumb, pull the safety button placed on the connector

Step 2: Turn the connector to the left and pull it out.





## 5. Recommended System Configuration





## 6. Tripod Operation

The Acoustic Density B15 loudspeaker includes a 35mm (1-3/8") stand mount to allow the mounting of another speaker on top of the B15 bass.

Make sure to:

- Check the specifications of the speaker stand to be certain it is capable of supporting the weight of the speaker.
- Route cables and position the stand so that performers, production crew and audience members will not trip over the stand or cables and pull the speaker system over. Secure cables with wire ties or tape whenever possible.
- Check that the surface the B15 is placed on is level and plane because there is a high risk of tipping over if not.
- Do not attempt to suspend more than one speaker on a stand designed for a single speaker.
- Unless you are confident that you can safely handle lifting the weight of the speaker onto the stand, ask another person to help you place it.





**acoustic density**

[www.acousticdensity.com](http://www.acousticdensity.com) | [office@acousticdensity.com](mailto:office@acousticdensity.com)

Str. Piata Unirii 12/6, Cluj-Napoca, Romania